

**High intensity 200 000 cd White Obstacle Light,
ICAO High Intensity Type A****Key features**

- Based on LED-technology
- 200 000 / 20 000 / 2 000 cd effective flashing white
- 120° x 3° beam spread
- Extremely reliable - long lifetime
- Maintenance free
- Low power consumption
- 230 VAC nominal operating voltage
- Stabilised light output
- Lightweight and small – low wind load factor
- Easy to install
- Control by Obelux LHC Light Head Controller

Benefits

- Very low cost of ownership
- Supply power voltage variations do not affect to light output
- Low wind load
- Comes with five (5) years warranty
- Over 10 year continuous maintenance free operating time

Specifications met

- ICAO International Standards and Recommended Practices:
Aerodromes - Annex 14 Volume 1, 5th Edition, July 2009,
Chapter 6: High-intensity, Type A Fixed Obstacle Light

Photometric characteristics

- Intensity:
 - 200 000 cd effective @ day mode
 - 20 000 cd effective @ twilight mode
 - 2 000 cd effective @ night mode
- Colour aviation white
- Horizontal radiation pattern 120°
- Vertical radiation pattern 3°
- LED supply current stabilised by constant current generator

Mechanical characteristics

- Marine grade aluminium enclosure
- Glass cover
- Degree of protection IP65
- Operating temperature range -55...+55 °C
- Height 843 mm, width 353 mm, depth 213 mm
- Height 973 mm with mounting set
- Weight 27 kg, less than 35 kg with mounting set
- Wind load @ 200 km/h less than 1000 N

Electrical characteristics

- Nominal power consumption, 40 fpm, 250 ms flash duration:
 - Day mode: 250 W
 - Twilight mode: 88 W
 - Night mode: 27 W
- Maximum power cable length 10 m, up to 50 m as option

Made in Finland

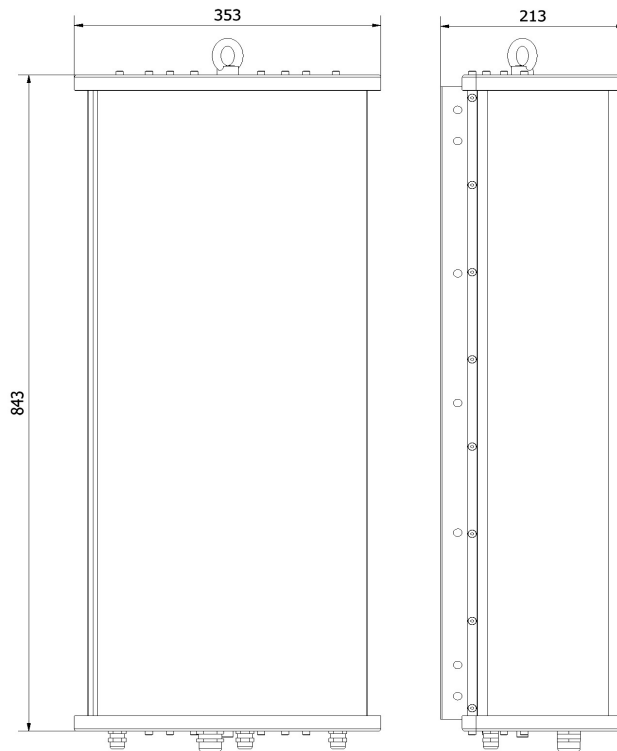
**Obelux HI-200KW-230-x LIGHT HEAD****Order code:****Obelux HI-200KW-230-V**

1 2 3 4

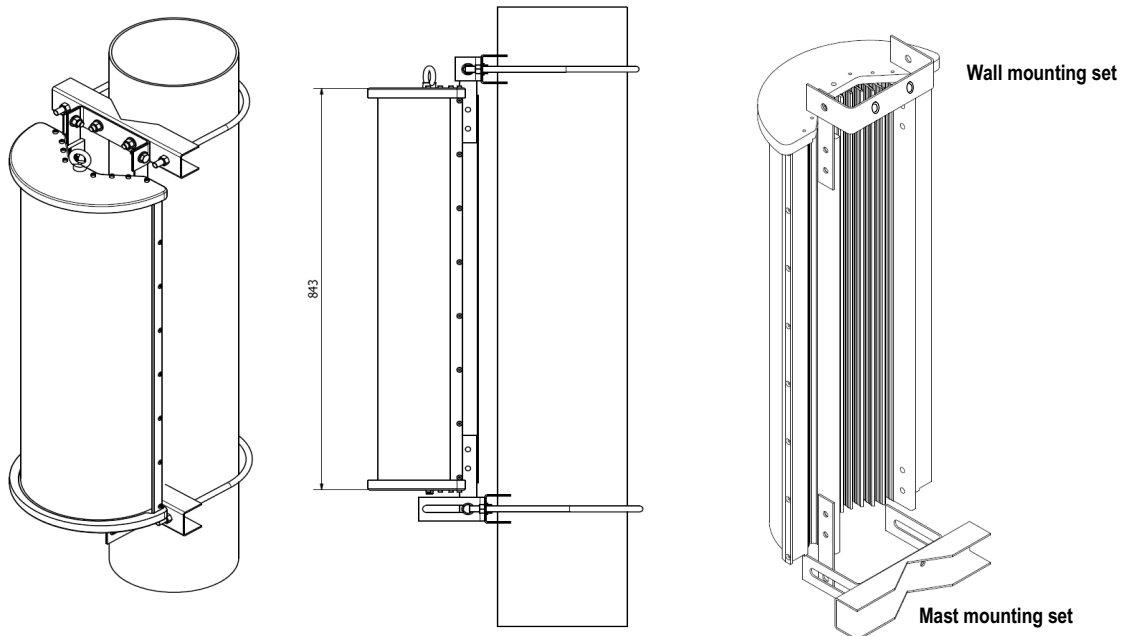
1 SerieLI: Low Intensity
MI: Medium Intensity
HI: High Intensity**2 Intensity and Colour**200K: 200 000 cd effective luminous intensity
W: White light colour**3 Operating Voltage**230: 230 Vac
115: 115 Vac**4 Mounting set**V: Mounting to vertical pipe
W: Mounting to vertical wall

High intensity 200 000 cd White Obstacle Light,
ICAO High Intensity Type A

LH mechanical dimensions



LH mechanical mounting examples



All mounting parts are hot dip galvanised steel

Technical information in this document is subject to change without notice. Copyright © Obelux Oy 2011