

230 V_{DC} 30 cd LFV Obstacle Light

Key features

- Based on LED-technology
- 30 cd luminous output
- Steady burning red light
- Complete set with accessories
- Extremely reliable
- Very long life time
- Low power consumption
- 230 VAC operating voltage
- Stabilised light output
- Easy to install
- Mounting set and terminal box included

Specifications met

- BCL-F 4-1-5, LFS 1978:4, paragraph 7.2 lägintensiv hinderbelysning

Benefits

- Long maintenance intervals
- Low energy costs
- Input power voltage variations not affect to light output
- Very low lifetime costs

Optical characteristics

- Intensity >30 cd
- Colour aviation red
- Horizontal radiation pattern 360°
- Vertical radiation pattern -10,° +35°
- Current for the LEDs is stabilised by constant current generator
- Expected lifetime without light output falling 20 cd >100 000 h

Electrical characteristics

- LEDs are in several separate groups
- Nominal operating voltage 230 V AC
- Power consumption <15 VA
- Operating voltage range 210 to 260 V AC
- Overvoltage protection
-

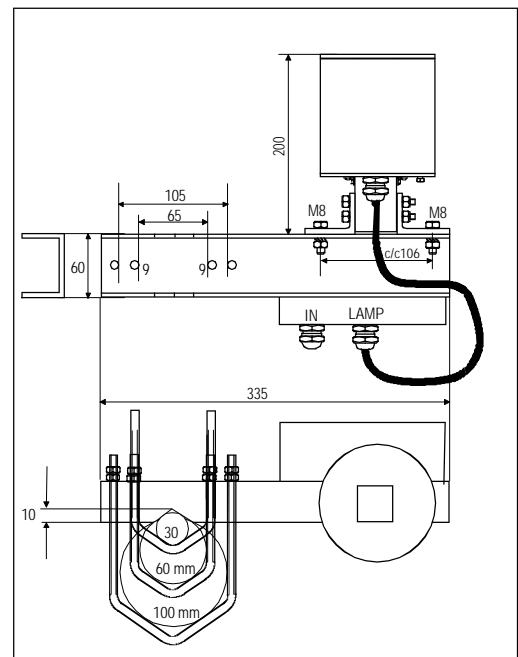
Other

- Black anodised aluminium light unit body
- Galvanised mounting arm
- Acid proof U-bolts and hex nuts
- Uncoloured glass cover
- Degree of protection IP 65
- Operating temperature range -55...+55°C
- Height 300 mm, diameter 140 mm
- Total weight 3.5 kg
- 5 year warranty

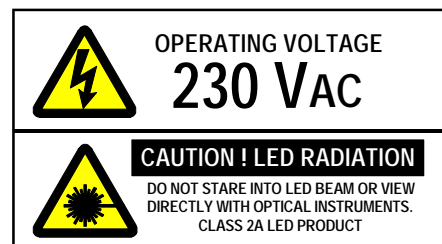
Order Code (light unit and mounting accessories): **Obelux 30-230-CST**



Obelux 30-230-CST



Obelux 30-230-CST dimensions



Technical information in this document is subject to change without notice. Copyright © Obelux Oy 2004

230 V_{DC} 30 cd LFV Obstacle Light

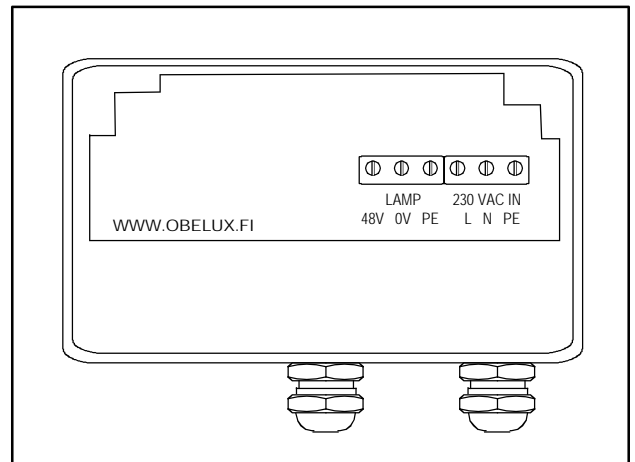
Obelux 30-230-CST is an obstacle light utilizing LED technology. The cabling and installation principles are similar to those of conventional obstacle lights.

Terminal box include power supply, screw terminals and overvoltage protectors.

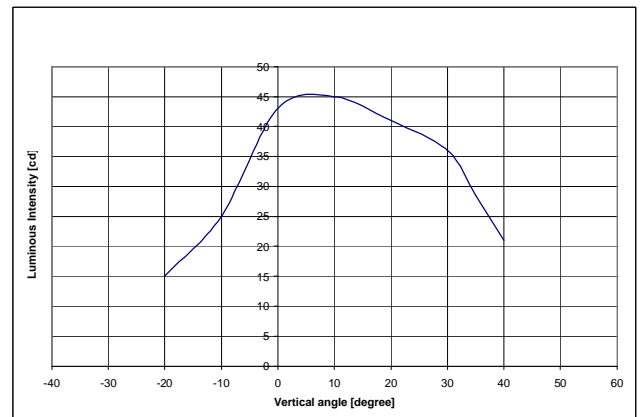
All connection alternatives can be protected with a 6 A or 10 A fuse or with a circuit breaker (C curve).

Installation specifications

- Cable gland: M20
- Cable diameter: 8...13 mm
- Wire diameter: max. 6 mm²
- Recommended cable: 2x1.5+1.5 or 2x2.5+2.5 mm²



Obelux 30-230-CST terminal box



Obelux 30-48-CST luminous intensity distribution

