

# Obelux Aviation Obstacle Lights



Medium intensity LED obstacle lights 4-5



Low-intensity LED obstacle lights 6-8



Low-intensity E27 Replacement units 9



Country-specific LED obstacle lights 10



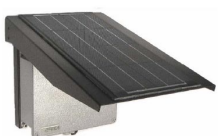
Power supplies 11



Fault monitoring units and photocells 12-13



Battery-operated portable lights 14



Solar powered systems 15



### Obelux Oy

**Back in 1996 Obelux was the first company to release a LED-based obstacle light and set a new standard for the whole industry.** Today Obelux is delivering its innovative aeronautical lighting products worldwide. All our products are based on LED technology and have an amazing track record in reliability.

**With a very long life time and low energy consumption,** with recyclable materials, our products are the best choice for sustainable development. Furthermore, our manufacturing practices are ISO 9002 and ISO 14001 certified.

**Obelux's patented technologies** make the products even more reliable and long lasting than other LED-based lighting devices on the market. This makes the Obelux products superior in difficult installation locations. Most Obelux products can be used virtually anywhere and no service is required.

#### **The Obelux obstacle lights bring many advantages:**

- Expected life time more than 15 years
- Exceptionally long 5 years warranty
- 95% lower energy consumption in comparison to traditional obstacle lights
- Easy to install due to small size and low weight
- Shock and vibration proof
- Suitable for solar power applications.
- Very low cost of ownership

**Delivering reliability to the customer is our mission.** The Obelux obstacle lights are proven to be extremely reliable, even in extreme nordic weather conditions. Over 60 000 Obelux obstacle lights have been installed since 1996 with only few units returned for warranty repair.

# Medium intensity LED obstacle lights

ICAO Type A, FAA Type L-865

## Obelux medium intensity obstacle light (MI-series)

- Mounting set included for either vertical pipe or horizontal surface (e.g. roof)
- More robust mechanical design
- Mechanical parts marine grade aluminium, acid proof steel or glass, suitable for offshore use
- 5 year warranty

### Interface unit

- 230 Vac input
- 400 W active power supply
- Constant power consumption
- Light unit monitoring and alarm generation in case of malfunction
- Power supply enclosure stainless steel, RST



## Technical data

- Nominal luminous intensity 20 000 cd at day mode and 2 000 cd at night mode
- Light colour white
- Beam width 3 deg vertically and 360 deg horizontally
- Operating voltages 230 Vac
- Meets ICAO medium-intensity type A and FAA L-865 requirements
- Three stage overvoltage protection
- Active PFC powersupply

## Options

- GPS synchronization
- Fault monitoring
- GSM alarm
- Master/slave -unit
- External photocell

Order code	ICAO standard	FAA standard	Operating Voltage	Power consumption (day/night)	Nominal intensity	Mounting set
MI-20KW-230-V	Type A	L-865	230 Vac	350/100 W (@ 60 fpm)	20 000/2000 cd	Vertical
MI-20KW-230-H	Type A	L-865	230 Vac	350/100 W (@ 60 fpm)	20 000/2000 cd	Horizontal
MI-20KW-115-V	Type A	L-865	115 Vac	350/100 W (@ 60 fpm)	20 000/2000 cd	Vertical
MI-20KW-115-H	Type A	L-865	115 Vac	350/100 W (@ 60 fpm)	20 000/2000 cd	Horizontal



### Horizontal mounting set

- For horizontal plate installations

## Available mounting set alternatives



### Vertical mounting set

- For 30...150 mm diameter mast structures

# Medium intensity LED obstacle lights

ICAO Type B and C, FAA Type L-864 and L-855

## Obelux medium intensity obstacle light (MI-series)

- Mounting set included for either vertical pipe or horizontal surface (e.g. roof)
- More robust mechanical design
- Mechanical parts marine grade aluminium, acid proof steel or glass, suitable for offshore use
- Photocell as a day/night switch as option
- Flasher as option
- Two cable glands, easy to chain
- Solar-powered systems available
- Battery back-up systems available
- Can be shipped with red, yellow or white LEDs (default red)
- 5 year warranty



## Technical data

- Nominal luminous intensity 2000 cd
- Beam width 3 deg vertically and 360 deg horizontally
- Operating voltages 24 and 48 Vdc and 115 and 230 Vac with AC/DC power supplies
- Meets ICAO medium-intensity type C and FAA L-864 and L-855 requirements
- ICAO type B FAA L-864 and L-855 light available with flash controllers
- Three stage overvoltage protection

## Options

- GPS synchronization
- Fault monitoring
- GSM alarm
- Master/slave -unit

Order code	ICAO standard	FAA standard*	Operating Voltage	Current consumption	Power consumption	Nominal intensity	Mounting set
MIHF-024-V	Type C, Type B*	L-864, L-855	24 Vdc	2.5 A	58 W	2000 cd	Vertical
MIHF-024-H	Type C, Type B*	L-864, L-855	24 Vdc	2.5 A	58 W	2000 cd	Horizontal
MIHF-048-V	Type C, Type B*	L-864, L-855	48 Vdc	1 A	48 W	2000 cd	Vertical
MIHF-048-H	Type C, Type B*	L-864, L-855	48 Vdc	1 A	48 W	2000 cd	Horizontal
MIHF-230-V	Type C, Type B*	L-864, L-855	230 Vac		48 W	2000 cd	Vertical
MIHF-230-H	Type C, Type B*	L-864, L-855	230 Vac		48 W	2000 cd	Horizontal

\*ICAO Type B light and FAA type L864 and L-855 (flashing red) can be configured using either applicable fault monitoring units (CSW) in pages 12 and 13 or power supply (PS) with flashing controller in page 11 or stand-alone photocell and flash controller PCFL-DC1-TB in page 13.

## Available mounting set alternatives



### Horizontal mounting set

- For horizontal plate installations



### Vertical mounting set

- For 30...100 mm diameter mast structures

# Low-intensity LED obstacle lights

ICAO Type A and B, FAA Type L-810

## Obelux low-intensity obstacle light (LI-series)

- Very flexible mechanical installation with several mounting alternatives
- More robust mechanical design
- Mechanical parts marine grade aluminium, acid proof steel or glass, suitable for offshore use
- Lowest power consumption in the world
- Built-in photocell as a day/night switch as option
- Flasher as an option
- Daisy chained with no external connection box needed
- Two cable glands, easy to chain without external terminal boxes
- 5 year warranty



## Technical data

- Operating voltages 10...60 V<sub>DC</sub> and 115/230 V<sub>AC</sub>
- Meets the requirements of ICAO Type A or ICAO Type B and FAA L-810 low-intensity obstacle lights
- Optional photocell sensitivity selectable 200/400/800 lx
- Optional flash rate 20/40/60 fpm with flash duration 250 ms
- Two stage overvoltage protection

## Options

- GPS synchronization
- Fault monitoring
- GSM alarm
- Master/slave -unit

Order code	ICAO standard	FAA standard	Operating Voltage	Current @12 V <sub>DC</sub>	Current @24 V <sub>DC</sub>	Current @48 V <sub>DC</sub>	Power consumption	Nominal intensity	Remark
LI-10-DCW-F	Type A	-	10...60 V <sub>DC</sub>	0.13 A	0.06 A	0.03 A	1.5 W	10 cd	
LI-10-115-F	Type A	-	115 V <sub>AC</sub>				1.9 VA	10 cd	
LI-10-230-F	Type A	-	230 V <sub>AC</sub>				1.9 VA	10 cd	
LI-10-DCW-PCFL	Type A	-	10...60 V <sub>DC</sub>	0.13 A	0.06 A	0.03 A	1.5 W	10 cd	Day/night switch, flasher
LI-10-115-PCFL	Type A	-	115 V <sub>AC</sub>				1.9 VA	10 cd	Day/night switch, flasher
LI-10-230-PCFL	Type A	-	230 V <sub>AC</sub>				1.9 VA	10 cd	Day/night switch, flasher
LI-32-DCW-F	Type B	L-810	10...60 V <sub>DC</sub>	0.29 A	0.15 A	0.07 A	3.5 W	32 cd	
LI-32-115-F	Type B	L-810	115 V <sub>AC</sub>				3.8 VA	32 cd	
LI-32-230-F	Type B	L-810	230 V <sub>AC</sub>				3.8 VA	32 cd	
LI-32-DCW-PCFL	Type B	L-810	10...60 V <sub>DC</sub>	0.29 A	0.15 A	0.07 A	3.5 W	32 cd	Day/night switch, flasher
LI-32-115-PCFL	Type B	L-810	115 V <sub>AC</sub>				3.8 VA	32 cd	Day/night switch, flasher
LI-32-230-PCFL	Type B	L-810	230 V <sub>AC</sub>				3.8 VA	32 cd	Day/night switch, flasher

# Mounting sets for low-intensity obstacle lights



Order code	Description
MS-HV80	Mounting set for 33...80 mm vertical or horizontal pipe All parts AISI 316 acid proof steel



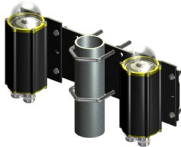
Order code	Description
MS-EV60	Mounting set for 30...60 mm mast structures
MS-EV100	Mounting set for 60...100 mm mast structures
MS-EV150	Mounting set for 100...150 mm mast structures

Mounting sets with extension plate for vertical pipe installations  
Plate marine grade anodised aluminium, bolts and nuts AISI 316 acid proof steel



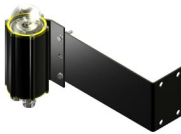
Order code	Description
MS-LVU	Mounting set for L and V -shape profiles
MS-LVA	Mounting set for L and V -shape profiles

All parts hot dip galvanised steel or AISI 316 acid proof steel



Order code	Description
MS-DEV60	Double mounting set for 30...60 mm mast structures
MS-DEV100	Double mounting set for 60...100 mm mast structures

Mounting set for 30...60 mm vertical pipe installation of two units  
All parts marine grade anodised aluminium or AISI 316 acid proof



Order code	Description
MS-RW	Mounting set for roof or wall, vertical or horizontal plate installation All parts AISI 316 acid proof steel



Order code	Description
MS-N1B	Mounting set for 1" NPT at bottom

# Low-intensity LED obstacle lights:

Obelux I generation models (models on page 6 recommended)



### ICAO Type A low-intensity obstacle lights

- Operating voltages 230 and 115 V<sub>AC</sub> and 12, 24 and 48 V<sub>DC</sub>
- Meets ICAO low-intensity type A requirements
- Integrated photocell available for DC models
- 5 year warranty



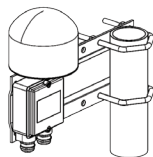
### ICAO Type B and FAA L-810 low-intensity obstacle lights

- Operating voltages 230 and 115 V<sub>AC</sub> and 12, 24 and 48 V<sub>DC</sub>
- Meets ICAO low-intensity type B and FAA L-810 requirements
- Integrated photocell available for DC models
- 5 year warranty

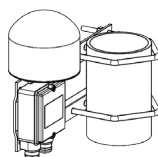
Order code	ICAO standard	FAA standard	Operating Voltage	Power consumption	Nominal intensity	Remark
Obelux-10-12-F	Type A	-	12 V <sub>DC</sub>	2.5 W	10 cd	
Obelux-10-24-F	Type A	-	24 V <sub>DC</sub>	5 W	10 cd	
Obelux-10-48-F	Type A	-	48 V <sub>DC</sub>	5 W	10 cd	
Obelux-10-115-F	Type A	-	115 V <sub>AC</sub>	9 VA	10 cd	
Obelux-10-230-F	Type A	-	230 V <sub>AC</sub>	9 VA	10 cd	
Obelux-10-12-PCFL	Type A	-	12 V <sub>DC</sub>	2.5 W	10 cd	Day/night switch, flasher
Obelux-10-24-PCFL	Type A	-	24 V <sub>DC</sub>	5 W	10 cd	Day/night switch, flasher
Obelux-10-48-PCFL	Type A	-	48 V <sub>DC</sub>	5 W	10 cd	Day/night switch, flasher
Obelux-10-115-PCFL	Type A	-	115 V <sub>AC</sub>	9 VA	10 cd	Day/night switch, flasher
Obelux-10-230-PCFL	Type A	-	230 V <sub>AC</sub>	9 VA	10 cd	Day/night switch, flasher
Obelux-32-12-F	Type B	L-810	12 V <sub>DC</sub>	9 W	32 cd	
Obelux-32-24-F	Type B	L-810	24 V <sub>DC</sub>	9 W	32 cd	
Obelux-32-48-F	Type B	L-810	48 V <sub>DC</sub>	9 W	32 cd	
Obelux-32-115-F	Type B	L-810	115 V <sub>AC</sub>	9 VA	32 cd	
Obelux-32-230-F	Type B	L-810	230 V <sub>AC</sub>	9 VA	32 cd	
Obelux-32-12-PCFL	Type B	L-810	12 V <sub>DC</sub>	9 W	32 cd	Day/night switch, flasher
Obelux-32-24-PCFL	Type B	L-810	24 V <sub>DC</sub>	9 W	32 cd	Day/night switch, flasher
Obelux-32-48-PCFL	Type B	L-810	48 V <sub>DC</sub>	9 W	32 cd	Day/night switch, flasher
Obelux-32-115-PCFL	Type B	L-810	115 V <sub>AC</sub>	9 VA	32 cd	Day/night switch, flasher
Obelux-32-230-PCFL	Type B	L-810	230 V <sub>AC</sub>	9 VA	32 cd	Day/night switch, flasher

Available also with other light colours

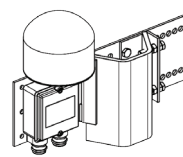
### Available mounting sets



MS-60



MS-100



MS-TRA-LVU

Order code	Description
MS-60	Obelux F-type obstacle light mounting set for 30...60 mm mast structures
MS-100	Obelux F-type obstacle light mounting set for 50...100 mm mast structures
MS-DV-60	Double mounting set for 30...60 mm mast structures
MS-DV-100	Double mounting set for 60...100 mm mast structures
MS-TRA-LVU	Obelux F-type obstacle light mounting set for L or V shaped mast structures

# Low-intensity E27 Replacement units



## ICAO Type A, E27 replacement unit

- LED Obstacle light
- Operating voltages
- AC: 230 and 115 V
- DC: 12, 24 and 48 V
- Meets ICAO low-intensity type A requirements
- Power consumption < 9 VA
- 5 year warranty



## ICAO Type B and FAA L-810, E27 replacement unit

- LED Obstacle light
- Operating voltages
- AC: 230 and 115 V
- DC: 12, 24 and 48 V
- Meets ICAO low-intensity type B and FAA L-810 requirements
- Power consumption < 15 VA
- 5 year warranty

Order code	ICAO standard	FAA standard	Operating Voltage	Power consumption	Nominal intensity
10-115-E27	Type A	-	115 V <sub>AC</sub>	< 9 VA	10 cd
10-230-E27	Type A	-	230 V <sub>AC</sub>	< 9 VA	10 cd
10-48-E27	Type A	-	48 V <sub>DC</sub>	< 5 W	10 cd
32-115-E27	Type B	L-810	115 V <sub>AC</sub>	< 15 VA	32 cd
32-230-E27	Type B	L-810	230 V <sub>AC</sub>	< 15 VA	32 cd
32-48-E27	Type B	L-810	48 V <sub>DC</sub>	< 9 W	32 cd

Available also with other light colours

# Country-specific LED obstacle lights



## 200 cd light units for the UK local requirements

- Nominal luminous intensity vertically 50 cd at 0...15 degrees and 200 cd at 5...8 degrees
- Horizontally omnidirectional
- Operating voltages 24 and 48 Vdc and 115 and 230 Vac with AC/DC power supplies
- Meets CAP 168 Low intensity Approach requirements
- Three stage overvoltage protection
- More robust mechanical design
- Mechanical parts marine grade aluminium, acid proof steel or glass, suitable for offshore use
- Photocell as a day/night switch as option
- Flasher as option
- Two cable glands, easy to chain without external terminal boxes
- Solar-powered systems available
- Battery back-up systems available
- Can be shipped with red, yellow or white LEDs (default red)
- 5 year warranty

Order code	CAP 168 standard	Operating Voltage	Current consumption	Power consumption	Nominal intensity	Mounting set
LI-200-024-H	Low intensity Approach	24 Vdc	2.5 A	58 W	200 cd	Horizontal
LI-200-024-V	Low intensity Approach	24 Vdc	2.5 A	58 W	200 cd	Vertical
LI-200-048-H	Low intensity Approach	48 Vdc	1 A	48 W	200 cd	Horizontal
LI-200-048-V	Low intensity Approach	48 Vdc	1 A	48 W	200 cd	Vertical
LI-200-230-H	Low intensity Approach	230 Vac		48 W	200 cd	Horizontal
LI-200-230-V	Low intensity Approach	230 Vac		48 W	200 cd	Vertical



## Wind turbine LED obstacle light for Germany

- Operating voltage 24 Vdc
- Flash/steady burning operating modes
- Meets the requirements of BMVBM LS 11/60.01.87 - 01/5 Va 02
- Default light colour red. Other light colours also available
- Power consumption in flash mode 19 W and in steady burning mode < 38 W
- A mounting kit for 30...100 mm mast structures and a terminal box included
- 180 cd peak and 100 cd effective intensity in flash mode
- 5 year warranty

Order code	Standard	Operating Voltage	Power consumption	Nominal intensity
Obelux-150-24-CST	BMVBM LS 11/60.01.87 - 01/5 Va 02	24 Vdc	19 W (flash mode) 38 W (steady burning mode)	180 cd (peak) 100 cd (effective)

### Also available

- 100 cd light unit for Australia
- Custom solutions for national requirements



## Power supplies

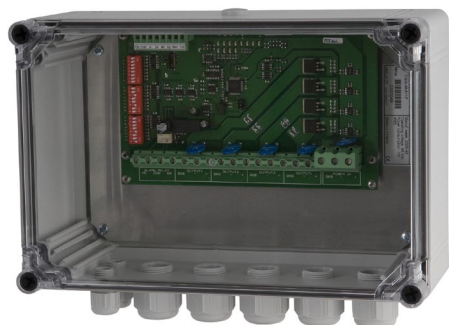
- Suitable for all DC-operated low-intensity obstacle light products
- Input voltages 110 and 230 V AC
- Output voltages 12, 24 and 48 V DC
- IP 67

Order code	Input voltage	Max output current	Output voltage	Max output power	Day/night switch	Flash controller
PS-24-3A5	230 V <sub>AC</sub>	3.5 A	24 V <sub>DC</sub>	84 W	No	No
PS-24-09	230 V <sub>AC</sub>	9 A	24 V <sub>DC</sub>	220 W	No	No
PS-48-1A8	230 V <sub>AC</sub>	1.8 A	48 V <sub>DC</sub>	90 W	No	No
PS-48-05	230 V <sub>AC</sub>	5 A	48 V <sub>DC</sub>	240 W	No	No
PS-24-3A5-PCFL	230 V <sub>AC</sub>	3.5 A	24 V <sub>DC</sub>	84 W	Yes	Yes
PS-24-09-PCFL	230 V <sub>AC</sub>	9 A	24 V <sub>DC</sub>	220 W	Yes	Yes
PS-48-1A8-PCFL	230 V <sub>AC</sub>	1.8 A	48 V <sub>DC</sub>	90 W	Yes	Yes
PS-48-05-PCFL	230 V <sub>AC</sub>	5 A	48 V <sub>DC</sub>	240W	Yes	Yes

Customer-specific high power supplies and control systems available.



# Fault monitoring units and photocells



## Fault monitoring and flash controller unit with 4 independent outputs

- Combined photocell, alarm and flash unit for obstacle lights
- Controls four obstacle lights independently
- Available operating voltages 24 or 48 Vdc. 12 Vdc optional.
- Fault monitoring is based on the measuring of the current consumption of the aviation lamp
- Selection of the CSW-unit should be based on the operating voltage and the current consumption of the aviation lamps connected to the unit
- Possible to configure to switch-over (master/slave) mode
- Suitable also for Obelux I generation lights

### Key features

- Light unit monitoring and alarm generation in case of malfunction
- Flash and steady burning modes, with several selectable flash modes
- GPS synchronization option in flash modes available
- GSM fault monitoring system available (SMS alarms)
- External day/night switch available as an option (Obelux PCE-DCW-F)
- IP 65

Order code	Operating voltage	Output max load	GPS synch.	Flash mode	Internal day/night switch included	External day/night switch available	GSM fault reporting
CSW-24-02-F	24 Vdc	4 x 0.5 A	No	Yes	Yes	Yes	No
CSW-24-16-F	24 Vdc	4 x 4 A	No	Yes	Yes	Yes	No
CSW-24-02-GPS	24 Vdc	4 x 0.5 A	Yes	Yes	Yes	Yes	No
CSW-24-16-GPS	24 Vdc	4 x 4 A	Yes	Yes	Yes	Yes	No
CSW-24-02-GSM	24 Vdc	4 x 0.5 A	No	Yes	Yes	Yes	Yes
CSW-24-16-GSM	24 Vdc	4 x 4 A	No	Yes	Yes	Yes	Yes
CSW-24-02-GSM-GPS	24 Vdc	4 x 0.5 A	Yes	Yes	Yes	Yes	Yes
CSW-24-16-GSM-GPS	24 Vdc	4 x 4 A	Yes	Yes	Yes	Yes	Yes
CSW-48-02-F	48 Vdc	4 x 0.5 A	No	Yes	Yes	Yes	No
CSW-48-16-F	48 Vdc	4 x 4 A	No	Yes	Yes	Yes	No
CSW-48-8+1-F	48 Vdc	2 x 4 + 2 x 0.5 A	No	Yes	Yes	Yes	No
CSW-48-02-GPS	48 Vdc	4 x 0.5 A	Yes	Yes	Yes	Yes	No
CSW-48-16-GPS	48 Vdc	4 x 4 A	Yes	Yes	Yes	Yes	No
CSW-48-8+1-GPS	48 Vdc	2 x 4 + 2 x 0.5 A	Yes	Yes	Yes	Yes	No
CSW-48-02-GSM	48 Vdc	4 x 0.5 A	No	Yes	Yes	Yes	Yes
CSW-48-16-GSM	48 Vdc	4 x 4 A	No	Yes	Yes	Yes	Yes
CSW-48-8+1-GSM	48 Vdc	2 x 4 + 2 x 0.5 A	No	Yes	Yes	Yes	Yes
CSW-48-02-GSM-GPS	48 Vdc	4 x 0.5 A	Yes	Yes	Yes	Yes	Yes
CSW-48-16-GSM-GPS	48 Vdc	4 x 4 A	Yes	Yes	Yes	Yes	Yes
CSW-48-8+1-GSM-GPS	48 Vdc	2 x 4 + 2 x 0.5 A	Yes	Yes	Yes	Yes	Yes



## Day/night switch (Photocell)

- NOTE! This day/night switch uses the same mechanics as the LI-series obstacle light
- Wide operating voltage range 10...60 Vdc
- Overvoltage protection
- Selectable thresholds
- IP 65

### Order code Description

PCE-DCW-F	External photocell for fault monitoring and flash controller units (CSW)
-----------	--



## Fault monitoring and flash controller unit with 2 outputs (master/slave)

- Combined photocell, switch-over (master/slave), alarm and flash unit for obstacle lights
- Controls two obstacle light in switch over (master/slave) mode
- Available operating voltage 10...60 Vdc
- Fault monitoring is based on the measuring of the current consumption of the aviation lamp
- Selection of the CSW-unit should be based on the operating voltage and the current consumption of the aviation lamps connected to the unit
- Light unit monitoring and alarm generation in case of malfunction
- Flash and steady burning modes, with several selectable flash modes
- Suitable also for Obelux I generation lights
- IP 65

Order code	Operating voltage	Output max load	GPS synch.	Flash mode	Internal day/night switch included	External day/night switch available	GSM fault reporting	Suitable for
CSW-DCW-0A5-F	10...60 V DC	0.5/ 0.5 A	No	Yes	Yes	No	No	up to 2 LI-series lights
CSW-DCW-02-F	10...60 V DC	2/ 2 A	No	Yes	Yes	No	No	up to 2 Obelux I generation
CSW-DCW-04-F	10...60 V DC	4/ 4 A	No	Yes	Yes	No	No	up to 2 MI-series lights



## Stand-alone photocell and flash controller

- NOTE! This day/night switch uses the same mechanics as the I generation obstacle light
- Wide operating voltage range 10...60 Vdc and 230 Vac
- Overvoltage protection
- Selectable thresholds
- IP 65

### Order code Description

PCFL-DC1-TB	Stand-alone photocell and flash controller with max. 8 A load with yellow enclosure, 10...60 Vdc
PCFL-230-TB	Stand-alone photocell and flash controller with max. 1 A load with yellow enclosure, 230 Vac

# Battery-operated portable lights

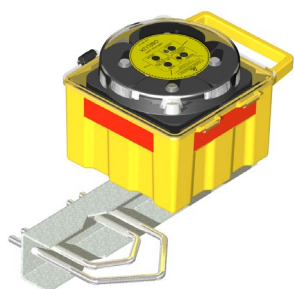


## Portable light units

- Battery-operated red or red/blue LED light for temporary marking of obstacles (red light mode) or taxiway edges (blue light mode).
- Mast mounting set available
- Continuous operating time typically 250 h
- Available also with other light colours
- 5-year warranty

Order code	Color	ICAO standard	FAA standard	Nominal intensity
10-12-P-R	Red only	Low intensity, Type A	-	10 cd
10-12-P-RB	Red/Blue	Low intensity, Type A	L-461T	10/2 cd

Available also with other light colours



## Portable light unit mounting set

- for 30...100 mm mast structures

Order code	Description
Obelux-CS-60-100	Portable light unit mounting kit for 30...100 mm mast structures



## Portable LED-post

- Battery-operated red obstacle light
- Continuous operating time typically 4 weeks
- Available also with other light colours
- 5-year warranty

Order code	Color	ICAO standard	Nominal intensity
LI-20-06-P-R-TU	Red	Low intensity, Type A	20 cd

### Solar powered obstacle light systems

Obelux LED obstacle lights are the lowest current consuming obstacle lights in the world. Together with Naps Solar electricity system they make an entirely self contained and extremely reliable system for locations where no other electricity outlet is available. The batteries in the system are charged during daytime and then supply the obstacle light system during night time.



Order code	Description
SPOL-M-10	A solar powered system with a 10 cd low intensity ICAO Type A obstacle light and a Naps Solar electricity system
SPOL-M-32	A solar powered system with a 32 cd ICAO low intensity Type B and FAA L-810 obstacle light and a Naps Solar electricity system
SPOL-M-2000	A solar powered system with a 2000 cd medium intensity ICAO Type A, FAA L-864 and FAA L-855 obstacle light and a Naps Solar electricity system

See [www.napssystems.com](http://www.napssystems.com) for further information

# OBELUX

LED LIGHTING

Headquarters, R&D, manufacturing  
and international sales

Obelux Oy  
Kutomotie 6B  
FI-00380 Helsinki  
Finland  
Tel +358 9 6871 6800  
Fax +358 9 621 5518  
E-mail [info@obelux.com](mailto:info@obelux.com)  
[www.obelux.com](http://www.obelux.com)

Local distributors

UK and Eire  
Contarnex Europe Ltd.  
[www.contarnex.com](http://www.contarnex.com)

Australia and New Zealand  
Airport lighting specialists Pty Ltd.  
[www.airportlighting.com.au](http://www.airportlighting.com.au)

Poland  
SAE OIZ p. Z o. o.  
[sae.com.pl](http://sae.com.pl)

Spain  
Soverin Control  
[www.soverincontrol.com](http://www.soverincontrol.com)

Philippines  
Swinerton Staten Solutions, Inc.  
+63 917 893 2171

Arabian Gulf (GCC) Countries  
Technolights Ltd.  
[www.technolightssenc.com](http://www.technolightssenc.com)

